



PROPERTYUNITY

MANAGEMENT - SALES
FACILITIES - LETTINGS



44 John Street, Sunderland, SR1 1AH

£174 Per Week



1



1



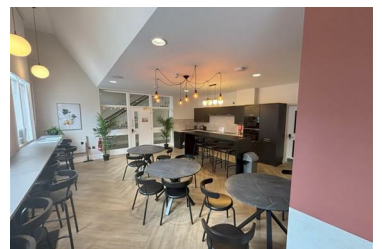
0



Welcome to Botanical View Court, a modern and stylish studio apartment located on John Street in Sunderland. This fully furnished studio offers a unique living experience, combining comfort and convenience in a vibrant city centre setting.

The apartment features an open plan layout that seamlessly integrates the bedroom, living room, and kitchen, creating a spacious and inviting atmosphere. The en-suite bathroom adds an extra touch of privacy and convenience, making it ideal for both students and professionals alike.

One of the standout features of this property is its proximity to the campus, making it an excellent choice for students seeking easy access to their studies. Additionally, the fantastic transport links ensure that you can explore all that Sunderland has to offer with ease.



10 Defender Court, Sunderland, Tyne & Wear, SR5 3PE

Tel: 03300 554 811 Email: info@propertyunitylets.com propertyunitylets.com